

PRESS RELEASE



GALERIE ART CRU BERLIN · ORANIENBURGER STRASSE 27 · 10117 BERLIN-MITTE
WWW.ART-CRU.DE · FACEBOOK.COM/GALERIEARTCRUBERLIN

+49 (0)30 / 24 35 73 14
GALERIE@ART-CRU.DE

DIE BLAUE STUNDE Art from the Open Atelier at St. Hedwig-Hospital

Vernissage: Thursday, 07.08.2014, 6 pm
Exhibition: 08.08.2014 – 05.09.2014
Opening Hours: Tuesday- Saturday, 12 - 6 pm
Galerie ART CRU Berlin, Oranienburger Str. 27, 10117 Berlin-Mitte, Germany

Greetings: Prof. Dr. Felix BERPPOHL
Head of Department Psychiatric University Hospital
of the Charité at St. Hedwig-Hospital

On „Blaue Stunde“ in literature: Mechthild Niemann-Mirmehdi
Director Therapeutic Services PUK Charité at St. Hedwig-Hospital

Introduction: Paula Schmidt-Dudek
Creative Director Open Atelier at St. Hedwig-Hospital

Music: Live Musik Now
Erik Asgeirsson (Island), Violoncello

Galerie ART CRU Berlin presents around 30 new works by artists from the Open Atelier at St. Hedwig-Hospital. It is the atelier's fourth exhibition with Galerie ART CRU Berlin.

“Die Blaue Stunde” – the time period of twilight when the light shines blue in the transition between day and night. The artists incorporate this phenomenon in different techniques and stylistic approaches into their works. Each artist is looking at shifts from one condition to another.

Daniela Sparr is known for her extensive and color-intensive interpretations. She presents a woman in front of an Yves-Klein-blue background: both vibrantly glowing and deeply absorbed in her own heavy thoughts at the same time. Another portrait, “Blaues Mädchen” has been created by **F.H.** for the exhibition using water colors. The girl, mischievously smiling with her white crescent mouth, reminds us- in her minimalistic design out of geometric shapes – of figures by Bauhaus-artist Oskar Schlemmer. **Beatrice Guder's** work shows an “Adria Landschaft” in which the sparkling, stirred up ocean – brought to the canvas with expressive brush strokes by the artist – shines brighter than the sky and the almost gloomy seeming shoreline. Also the mask-like face of **belruby** feels mysterious like the sea. Her work is a fanciful composition intensively pulling the viewer in: flowing shades of blue are pouring around the dotted face with his fascinating and fantastically adorned eyes. The image seems beguiling and partly disturbing in it's hypnotic effect simultaneously. This special perspective inside the work allows us to emphasize what can happen inside a human being “Wenn die Stunde schlägt” (when the hour strikes).

Trägerverein:
PS-Art e.V. Berlin
Oranienburger Straße 27
10117 Berlin-Mitte

Vorstand:
Alexandra von Gersdorff-Bultmann
Silvana Künze
Wolfram Voigtländer

Spendenkonto:
Bank für Sozialwirtschaft
IBAN: DE42100205000001082600
BIC: BFSWDE33BER

PRESS RELEASE



Galerie ART CRU Berlin, established in 2008 and located at the Kunsthof in Oranienburger Straße, is Berlin's only gallery for so-called Outsider Art. The term (introduced in 1945 by painter Jean Dubuffet as "Art Brut") refers to art by people with psychiatric disorders or mental disabilities. The gallery's main focus is to reduce the distance between established art and Outsider Art. Furthermore it aims at interconnecting the artists and their scenes. The gallery not only presents works by people with disabilities right in the centre of the art scene, but also increases their public visibility. Galerie ART CRU Berlin is backed by the non-profit federation PS-Art e.V. Berlin – a network of different institutions.

For further information and images please contact us:

Contact: Alexandra von Gersdorff-Bultmann
Matthias Hofmann (press)
Phone: + 49 / (0)30 24 35 73 14 // + 49 / (0)172 3833728
Mail: galerie@art-cru.de
Web: www.art-cru.de
Fb: facebook.com/GalerieARTCRUBerlin
Hours: Tuesday till Saturday / 12 – 6 pm

Trägerverein:
PS-Art e.V. Berlin
Oranienburger Straße 27
10117 Berlin-Mitte

Vorstand:
Alexandra von Gersdorff-Bultmann
Silvana Künze
Wolfram Voigtländer

Spendenkonto:
Bank für Sozialwirtschaft
IBAN: DE42100205000001082600
BIC: BFSWDE33BER

PRESS RELEASE



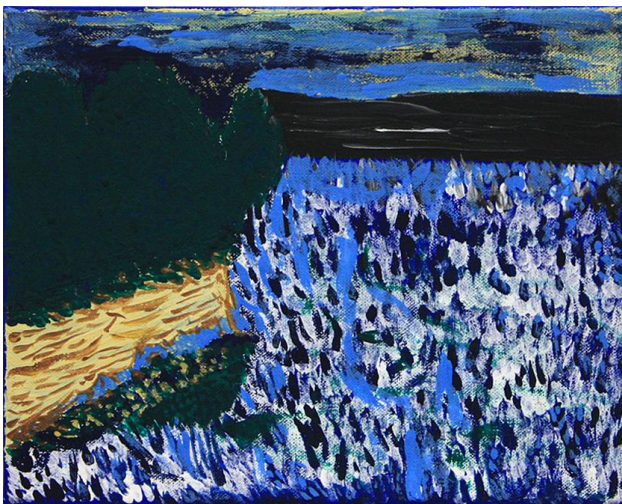
For printable image material please contact:
galerie@art-cru.de



Daniela Sparr, Matisse in Blau, 2014
acrylic on paper, 50x64



F.H., Blaues Mädchen, 2014
water color, 24x32



Beatrice Guder, Adria-Landschaft, 2014
Acrylic on canvas, 24x30



belruby, Wenn die Stunde schlägt, 2014
acrylic on paper, 64x50

Photos: Silvia Thomas-Mundt

Trägerverein:
PS-Art e.V. Berlin
Oranienburger Straße 27
10117 Berlin-Mitte

Vorstand:
Alexandra von Gersdorff-Bultmann
Silvana Künze
Wolfram Voigtländer

Spendenkonto:
Bank für Sozialwirtschaft
IBAN: DE42100205000001082600
BIC: BFSWDE33BER